

## CL16J-BK

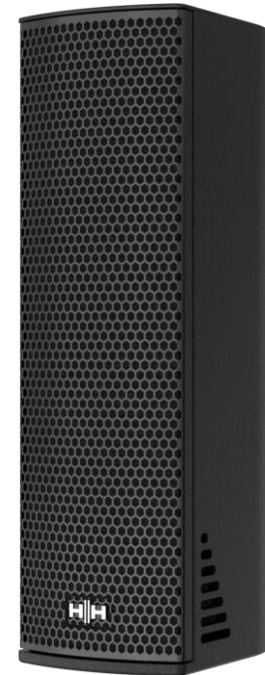
4 x 4" Passive Column Array

### FEATURES

- 4 x 4" mid-frequency drivers, 12 x 0.75" high-frequency drivers.
- 127dB Max SPL (Peak).
- Frequency Response of 80Hz - 20kHz ( $\pm 3$ dB).
- 100° (H) x 40° (V) dispersion angle.
- Asymmetric vertical projection.
- Robust wooden enclosure with a wear-resistant finish.

### APPLICATIONS

- Houses of Worship
- Museums
- Public Transport Stations
- Conference Spaces
- Lecture Halls
- Live Sound Reinforcement



### DESCRIPTION

The CL16J is an elegant 2-way passive column array speaker system that comprises 4 x 4-inch mid-frequency drivers alongside 12 x 0.75-inch high-frequency drivers with a maximum SPL of 127dB (peak).

The CL16J has a horizontal dispersion angle of 100° (-6dB), and a vertical dispersion angle of 40° (-6dB). The CL16J uses asymmetric vertical projection (+15°/-25°) reducing the requirement for tilting the speaker on installation and optimising the coverage angle when installed at a static height. This helps to simplify and speed up the installation process.

Mounting options include 2 x M8 mounting points for the CL16J-FLB bracket. The rear panel offers input connection via Euroblock.

The robust plywood enclosure is finished in a scratch/wear-resistant paint, with a perforated hexagonal mesh steel grille with acoustic foam backing. Available in black or white.

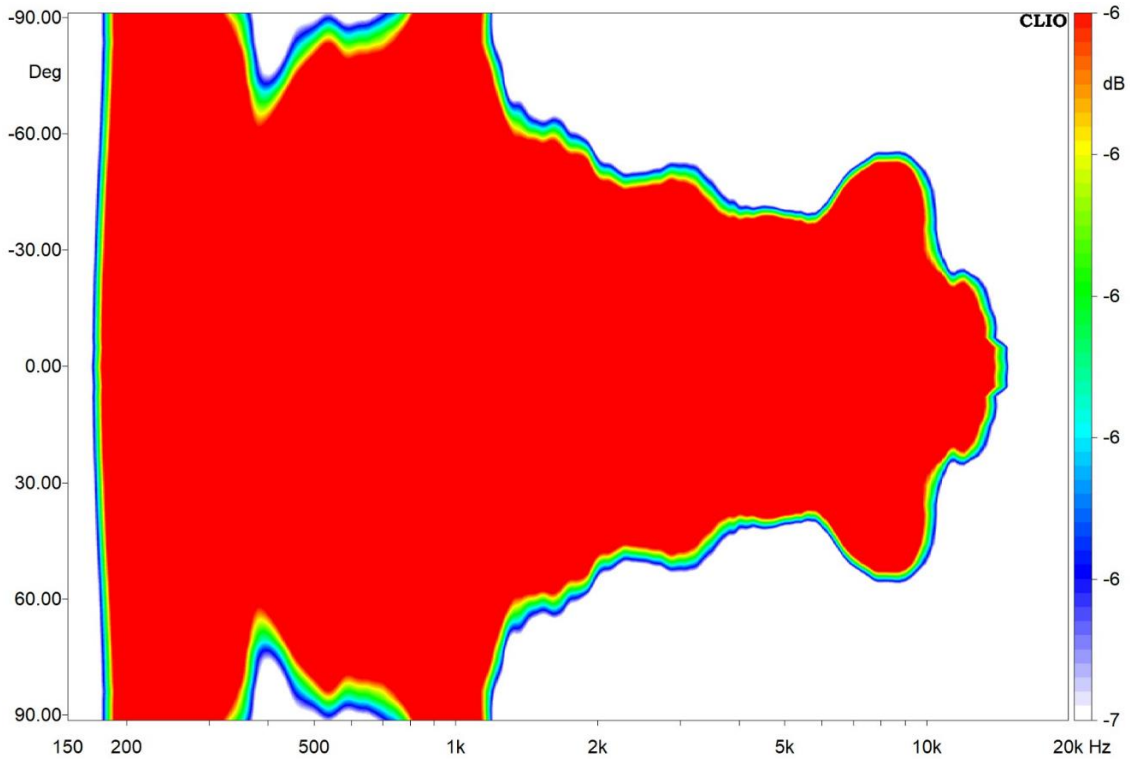


## Specifications

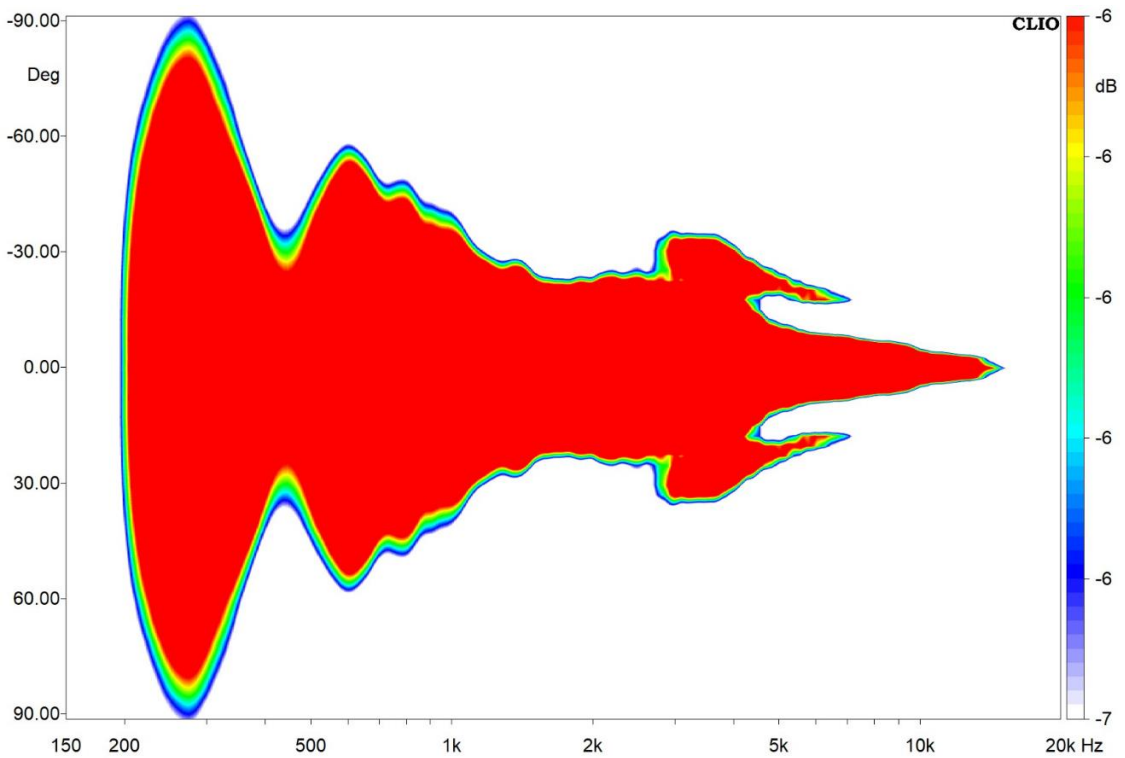
<b>Specifications</b>	
System type	Column Array PA System
Frequency Response	80Hz - 20kHz ( $\pm 3$ dB)
	60Hz - 25kHz (-10dB)
Horizontal Coverage Angle	100° (-6dB)
Vertical Coverage Angle	40° (-6dB)
Power Rating	200W RMS, 400W Program, 800W Peak
Maximum SPL	121dB Continuous, 127dB Peak
Sensitivity	98dB
Nominal Impedance	8 $\Omega$
<b>Speaker</b>	
MF Driver	4 x 4" mid-frequency drivers
HF Driver	12 x 0.75" high-frequency drivers
<b>Enclosure</b>	
Cabinet	Plywood
Finish	Scratch-resistant and wear-resistant paint finish.
Grille	Hexagonal mesh perforated steel with acoustic foam backing
Fittings	Connection parts, threaded pole-mount socket, mounting points
Mounting Bracket	2 x M8 mounting points for standard CL16J-FLB
<b>Connect</b>	
Connectors	Removable locking connector with screw terminals.
Pin Connections (Input)	+/-
Dimensions (H/W/D)	475 x 140 x 185mm
Weight	4.9kg (10.8lbs)



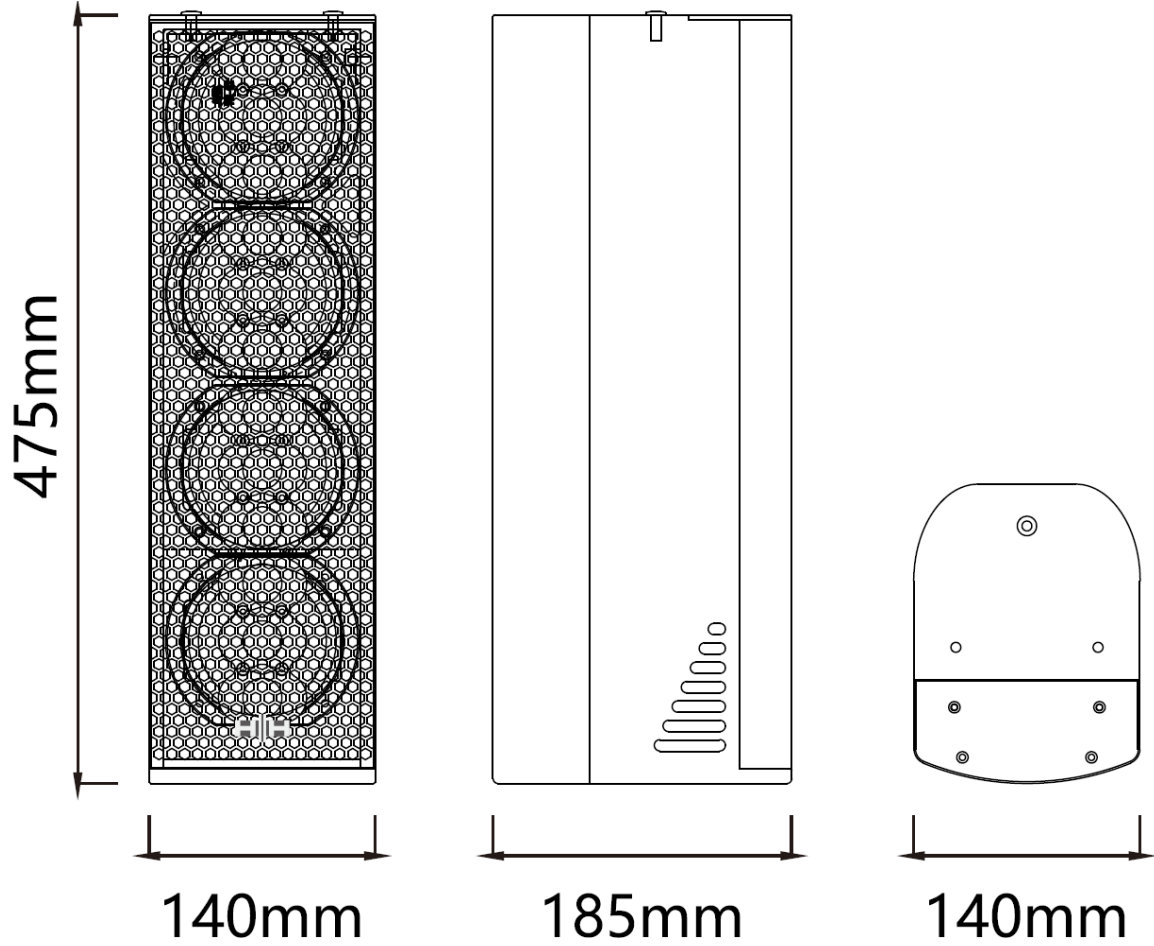
### Horizontal Dispersion



### Vertical Dispersion



## DIMENSIONS



HH Electronics is a trading style of  
Headstock Distribution Ltd,  
Steelpark Road, Coombswood Business Park West,  
Halesowen, West Midlands, B62 8HD, UK.  
© 2024 HH Electronics Ltd  
[www.hhaudio.com](http://www.hhaudio.com)

In the interest of continued development, HH reserves the right to amend  
product specification without prior notification.

